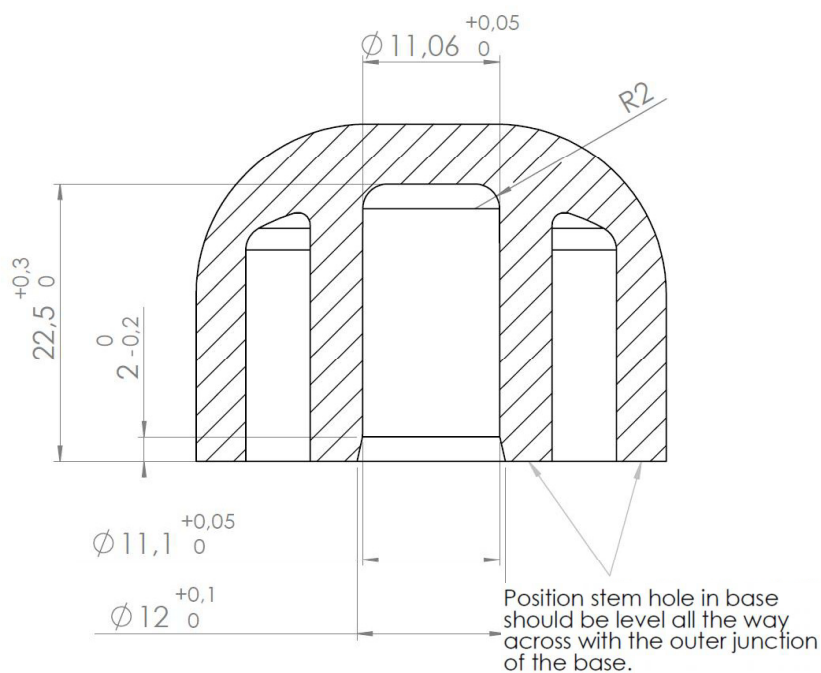


Technical Bulletin No. 7

Borehole Recommendations for Aluminum and Plastic Chair Bases (11 mm)

For the design of bore holes in aluminum or plastic chairbases with a nominal diameter of 11 mm we recommend to use the dimensions indicated in the illustration.



In our recommendation all direct stems with a nominal diameter of 11 mm will fit.

When using a standard stem a circlip of 11.4 mm will be sufficient to ensure the necessary extraction force. When higher extraction force is required a circlip of 11.6 mm can be applied as well. Please note the necessary mounting force will be higher accordingly.



GROSS + FROELICH
GMBH & CO. KG

Josef-Beyerle-Str. 7
D- 71263 Weil der Stadt

Also our patented No-Noise™ stem with circlip 11.4 mm can be used and will provide the necessary extraction force. The No-Noise™ stem is applicable for bore holes as from 11.00 mm until 11.25 mm.

When the bore hole is bigger than indicated in our recommendation circlips with wider external diameters are to be applied. For standard stems there are circlips available with an external diameter of 11.4 mm, 11.6 mm and 11.8 mm.

The No-Noise™ stem variation with circlip 11.65 mm is applicable for bore hole diameters starting from 11.20 mm until 11.40 mm.

The stems are offered in different lengths. We consider the length of 19.5 mm as sufficient with respect to mechanical stability. Concerning the length any kind of stem can be used as long the bore depth is sufficient.